

Rex Gooding



4 Hampton Road, West Bridgford, NG2 7AJ

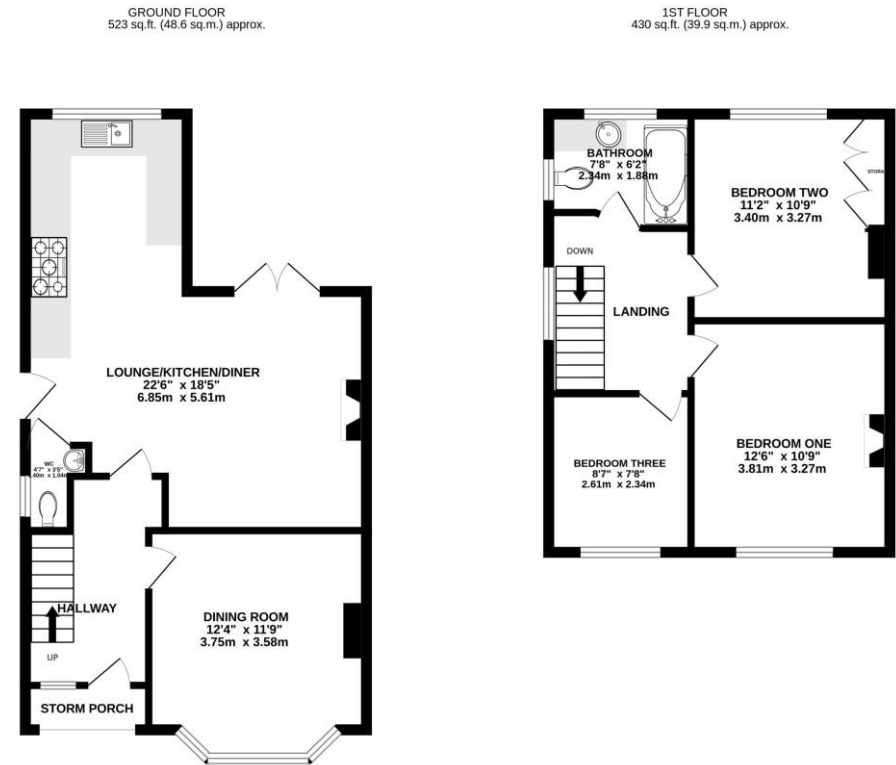
Guide Price: £399,950

4 Hampton Road, West Bridgford, NG2 7AJ

A beautifully presented bay fronted semi-detached home that has been extended to the rear to create a fantastic L shaped kitchen diner with living space. There are French doors onto a good size West facing rear garden which enjoys a lovely aspect across neighbouring gardens. The living room is beautifully appointed with a bay window. Downstairs WC. To the first floor are three bedrooms and a recently re-fitted modern bathroom. The property benefits from modern gas central heating and double glazing and is only a short walk to West Bridgford's Central Avenue. Within catchment for the Jesse Gray Primary School and The West Bridgford School.

Accommodation & Amenities

- Beautifully Presented Accommodation Throughout
- Extended L Shaped Kitchen Diner with Living Space
- French Doors onto West Facing Rear Garden with Lovely Aspect
- Separate Bay Fronted Living Room
- Downstairs WC
- Three Bedrooms & Recently Re-Fitted Modern Bathroom
- Modern Gas Central Heating & Double Glazing Throughout
- Within Catchment for the Jesse Gray Primary School & The West Bridgford School
- Short Walk to West Bridgford's Central Avenue



SEMI DETACHED HOUSE
TOTAL FLOOR AREA: 953 sq.ft. (88.6 sq.m.) approx.
Whilst every attempt has been made to ensure the accuracy of the floorplan contained here, measurements of doors, windows, rooms and any other items are approximate and no responsibility is taken for any error, omission or mis-statement. The plan is for illustrative purposes only and should be used as such by any prospective purchaser. The services, systems and appliances shown have not been tested and no guarantee as to their operability or efficiency can be given.
Made with Metropix ©2024

















